



FOREM PRO LINE

**BOLTING
TOOLS**



ABOUT US

The solutions and products distributed by *FOREM* help to facilitate the daily lives of our customers and increase their efficiency at work. The diversity of services and skills of the *FOREM* team are undoubtedly important points given the offer on the market.

Our partner approach, our understanding of your needs and our cutting-edge expertise in the industrial environment allow us to choose the right solutions adapted to you without increasing your costs. Once we have found the best solutions with our team, our consultative approach and meeting specifications are sure bets to generate a very advantageous cost / benefit relationship.

The hydraulic and pneumatic products distributed by *FOREM* are recognized in the market to be in the lead for their design, their technology, their robustness and their reliability. *FOREM* offers a technical support which will manage you towards the best solutions adapted to your needs, an after-sales service and a support in the use. So we assure a peace in the state of mind of our customers.

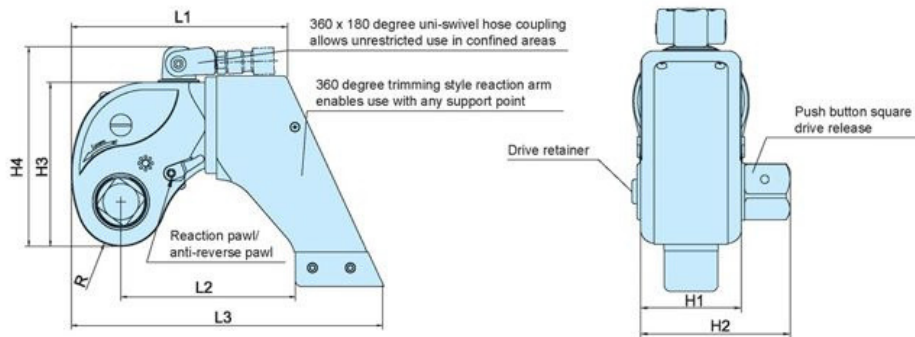
To resume, we choose to differentiate ourselves from other companies with a consultative approach and a top of the range on the market. All the customers who measured their return of investment made in *FOREM* products were able to tell you the value of the products and the service obtained.

▼ FTSD SERIES SQUARE DRIVE HYDRAULIC TORQUE WRENCH



> CHARACTERISTICS

- Made with high grade aluminium titanium alloy and high strength alloy steel.
- +/- 3% accuracy.
- 360° uni-swivel hose coupling
- Anti-reversed pawl designed to prevent ratchet return and maintain required torque.
- 2 years warranty.

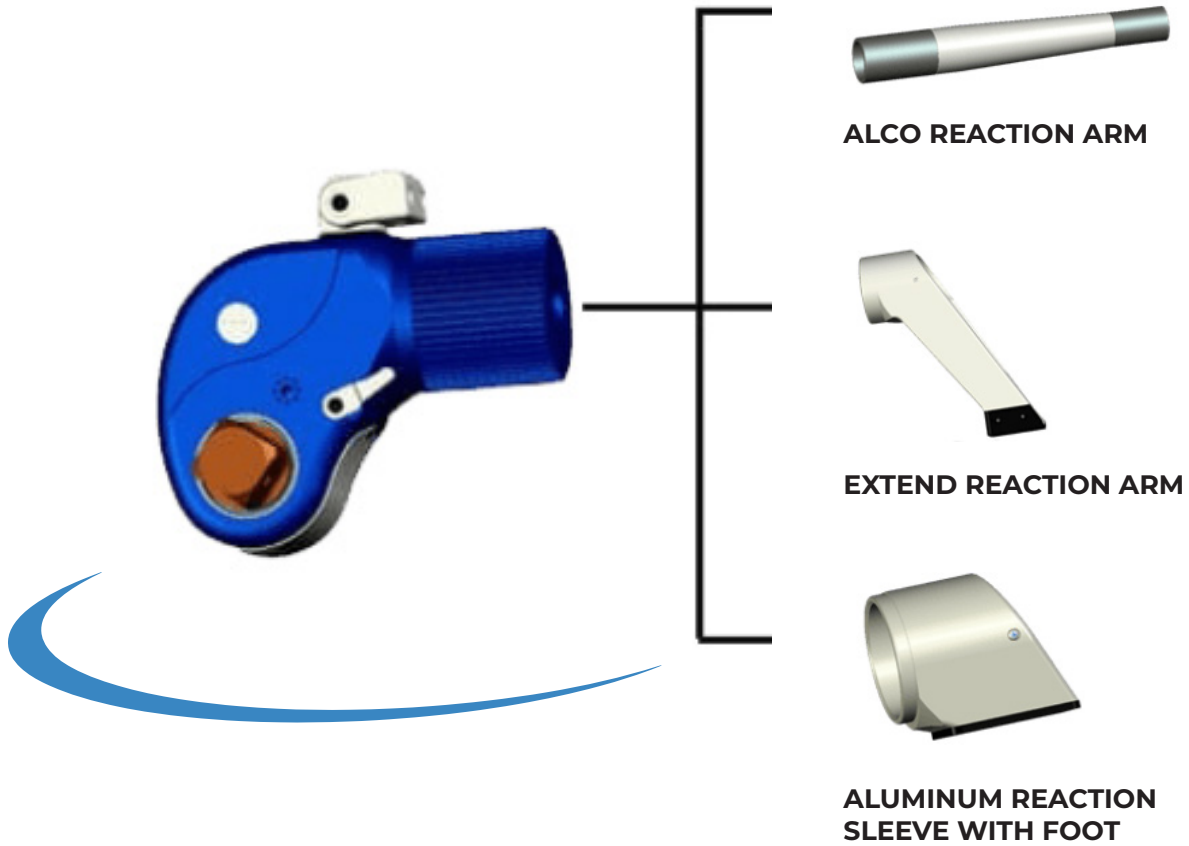


> SPECIFICATIONS SHEET

Model	Torque Range		Square Drive	Dimensions								Drive Unit Weight
				L1	L2	L3	H1	H2	H3	H4	R	
	Ft.lb	N.m	Inch	Inch								Lbs
FTSD-1	121-1299	164-1760	3/4"	5,12	4,02	7,17	2,05	3,03	3,78	5,24	1,02	4,4
FTSD-3	320-3197	433-4332	1"	6,70	5,51	9,80	2,76	3,86	5,00	6,50	1,37	8,8
FTSD-5	548-5476	742-7420	1-1/2"	7,95	6,30	11,26	3,19	4,92	5,87	7,24	1,57	15,4
FTSD-8	749-7697	1015-10430	1-1/2"	8,97	7,24	12,83	3,54	5,28	6,77	8,15	1,84	22,1
FTSD-10	1114-11137	1509-15090	1-1/2"	9,33	7,56	13,23	3,94	5,67	7,13	8,50	2,00	26,5
FTSD-15	1432-14324	1940-19409	1-1/2"	10,75	8,78	15,39	4,33	6,46	8,11	9,49	2,24	44,1
FTSD-20	1848-19518	2504-26447	2-1/2"	11,30	9,76	17,05	4,72	7,36	8,70	10,08	2,35	55,1
FTSD-25	2442-35554	3309-34626	2-1/2"	12,72	10,08	18,27	5,43	8,11	10,16	9,09	2,79	72,8
FTSD-35	3499-34992	4741-47414	2-1/2"	13,82	10,67	19,45	6,02	8,54	10,98	12,40	3,02	94,8
FTSD-50	5111-51105	6925-69247	2-1/2"	14,80	11,61	20,79	6,38	8,90	11,46	12,83	3,10	114,6

▼ **FTSD SERIES**

**HYDRAULIC TORQUE WRENCH ACCESSORIES
SQUARE DRIVE WRENCH REACTION ARMS**

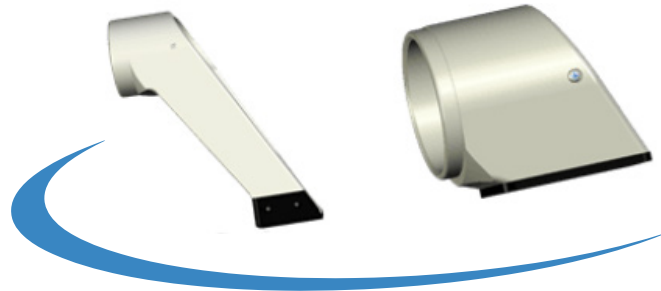


**▼ FTSD SERIES HYDRAULIC TORQUE WRENCH ACCESSORIES
SQUARE DRIVE WRENCH REACTION ARMS**



ALCO REACTION ARM

	6" Alco Arm	12" Alco Arm	18" Alco Arm	24" Alco Arm
FTSD-1	FTSD1-ALC6	FTSD1-ALC12	FTSD1-ALC18	FTSD1-ALC24
FTSD-3	FTSD3-ALC6	FTSD3-ALC12	FTSD3-ALC18	FTSD3-ALC24
FTSD-5	FTSD5-ALC6	FTSD5-ALC12	FTSD5-ALC18	FTSD5-ALC24
FTSD-8	FTSD8-ALC6	FTSD8-ALC12	FTSD8-ALC18	FTSD8-ALC24
FTSD-10	FTSD10-ALC6	FTSD10-ALC12	FTSD10-ALC18	FTSD10-ALC24
FTSD-15	FTSD15-ALC6	FTSD15-ALC12	FTSD15-ALC18	FTSD15-ALC24
FTSD-20	FTSD20-ALC6	FTSD20-ALC12	FTSD20-ALC18	FTSD20-ALC24
FTSD-25	FTSD25-ALC6	FTSD25-ALC12	FTSD25-ALC18	FTSD25-ALC24
FTSD-35	FTSD35-ALC6	FTSD35-ALC12	FTSD35-ALC18	FTSD35-ALC24
FTSD-50	FTSD50-ALC6	FTSD50-ALC12	FTSD50-ALC18	FTSD50-ALC24



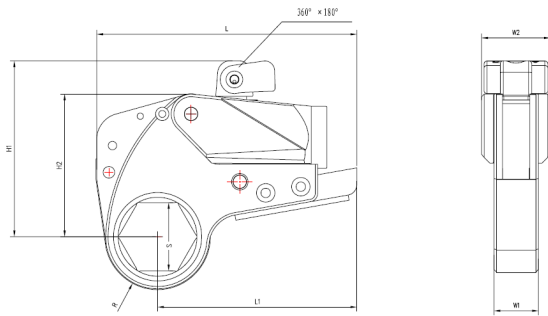
**REACTION ARM EXTENDED
& REACTION SLEEVE**

	Reaction Sleeve	Reaction Arm 3" Extended
FTSD-1	FTSD1-RS	FTSD1-RAEXT3
FTSD-3	FTSD3-RS	FTSD3-RAEXT3
FTSD-5	FTSD5-RS	FTSD5-RAEXT3
FTSD-8	FTSD8-RS	FTSD8-RAEXT3
FTSD-10	FTSD10-RS	FTSD10-RAEXT3
FTSD-15	FTSD15-RS	FTSD15-RAEXT3
FTSD-20	FTSD20-RS	FTSD20-RAEXT3
FTSD-25	FTSD25-RS	FTSD25-RAEXT3
FTSD-35	FTSD35-RS	FTSD50-RAEXT3
FTSD-50	FTSD50-RS	FTSD50-RAEXT3

CUSTOM SIZES AVAILABLE ON REQUEST

▼ **FTXD-FTXL SERIES**

LOW PROFILE HYDRAULIC TORQUE WRENCH

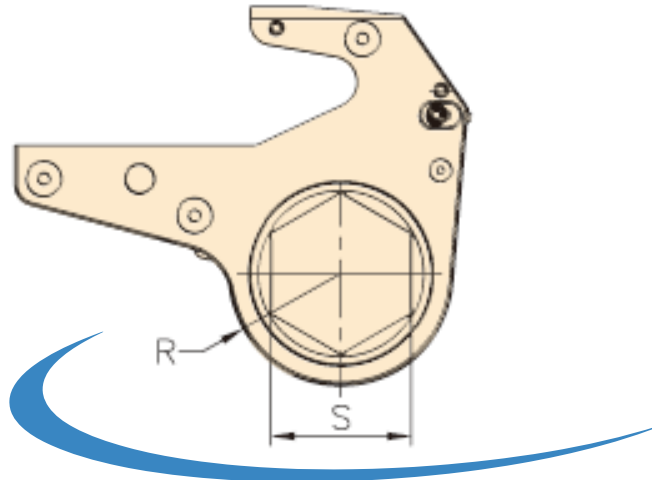


> **CHARACTERISTICS**

- Versatile, accurate, durable and dependable.
- Made with high grade aluminum titanium alloy and high strength alloy steel.
- Multi position safety swivel 360°.
- Smallest design, fit friendly.
- Nickel plated for corrosion resistance.
- 2 years warranty.

Model	FTXD-2	FTXD-4	FTXD-8	FTXD-14	FTXD-18	FTXD-30
Max. Torque FT/LB N.m	1869 (2534)	3977 (5392)	7709 (10452)	11982 (16245)	16889 (22899)	29974 (40639)
Min. Torque FT/LB N.m	180 (244)	361 (489)	750 (1017)	1272 (1724)	1657 (2247)	2997 (4064)
FTXL Hex Link Size - Inch (mm)	3/4" - 2" (19-50)	1-1/16" - 2-9/16" (27-65)	2" - 3-5/8" (50-90)	3-5/16" - 4-9/16" (85-115)	3-5/8" - 5-5/16" (95-135)	3-15/16" - 6-1/8" (100-155)
L - Inch (mm)	8.07 (205)	9.89 (251.3)	11.91 (302.5)	14.45 (367)	15.77 (400.5)	18.01 (457.5)
L1 - Inch (mm)	5.79 (147)	7.40 (188)	9.17 (233)	11.14 (283)	12.13 (308)	14.33 (364)
H1 - Inch (mm)	5.08 (129)	6.42 (163)	7.52 (191)	8.78 (223)	9.69 (246)	11.10 (282)
H2 - Inch (mm)	3.94 (100)	5.35 (136)	6.56 (166.5)	7.8 (198)	8.82 (224)	10.43 (265)
W1 - Inch (mm)	1.26 (32)	1.61 (41)	2.09 (53)	2.52 (64)	2.76 (70)	3.31 (84)
W2 - Inch (mm)	1.97 (50)	2.6 (66)	3.27 (83)	3.90 (99)	4.33 (110)	5.20 (132)
R - Inch (mm)	1.63 (41.3)	2.12 (53.8)	2.71 (68.8)	3.36 (85.3)	3.89 (98.8)	4.56 (115.8)
Weight - Lbs (Kg)	4.9 (2.2)	11.0 (5.0)	21.2 (9.6)	37.3 (16.9)	50.5 (22.9)	83.8 (38.0)

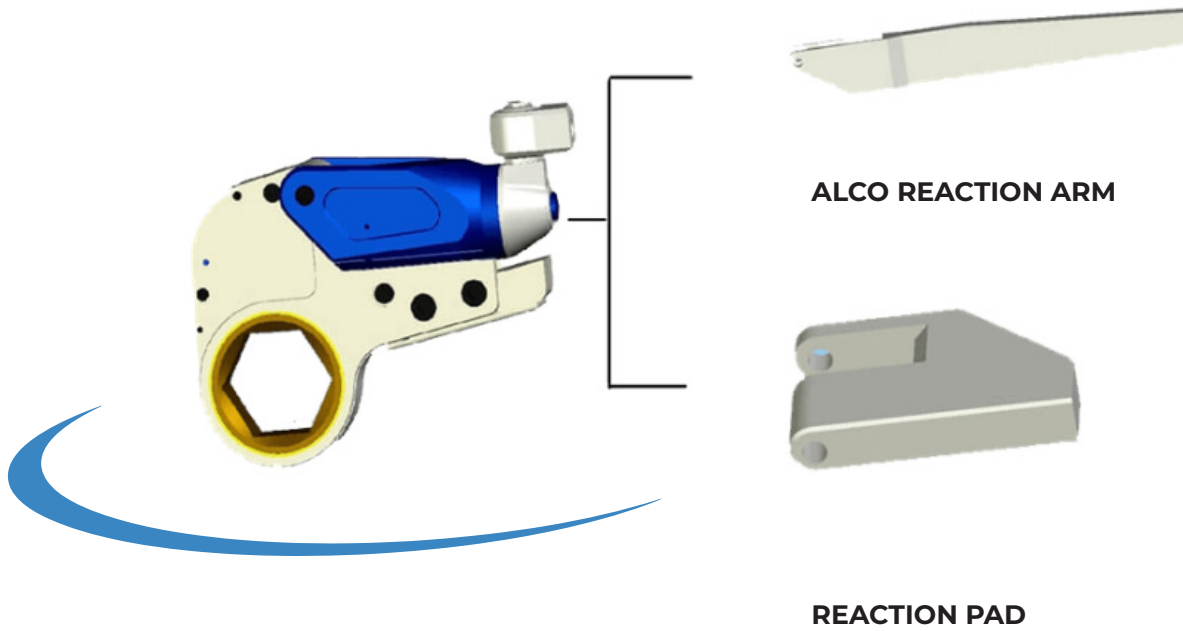
▼ **FTXL SERIES**
FTXD RATCHET
LINK



Hex Size (S)	FTXL-2	FTXL-4	FTXL-8	FTXL-14	FTXL-18	FTXL-30
1-1/16" (27MM)	FTXL2-101					
30MM	FTXL2-30MM					
1-1/4" (32MM)	FTXL2-104					
1-7/16" (36MM)	FTXL2-107					
1-5/8" (41MM)	FTXL2-110	FTXL4-110				
1-13/16" (46MM)	FTXL2-113	FTXL4-113				
50MM	FTXL2-50MM	FTXL4-50MM				
2"	FTXL2-200	FTXL4-200	FTXL8-200			
2-3/16" (55MM)	FTXL2-203	FTXL4-203	FTXL8-203			
2-3/8" (60MM)		FTXL4-206	FTXL8-206			
2-9/16" (65MM)		FTXL4-209	FTXL8-209	FTXL14-209		
2-3/4" (70MM)		FTXL4-212	FTXL8-212	FTXL14-212		
2-15/16" (75MM)		FTXL4-215	FTXL8-215	FTXL14-215		
3-1/8"			FTXL8-302	FTXL14-302	FTXL18-302	
80MM			FTXL8-80MM	FTXL14-80MM	FTXL18-80MM	
3-5/16"			FTXL8-305	FTXL14-305	FTXL18-305	
85MM			FTXL8-85MM	FTXL14-85MM	FTXL18-85MM	FTXL30-85MM
3-1/2"			FTXL8-308	FTXL14-308	FTXL18-308	FTXL30-308
90MM				FTXL14-90MM	FTXL18-90MM	FTXL30-90MM
3-11/16				FTXL14-311	FTXL18-311	FTXL30-311
3-3/4" (95MM)				FTXL14-312	FTXL18-312	FTXL30-312
3-7/8"				FTXL14-314	FTXL18-314	FTXL30-314
100MM				FTXL14-100MM	FTXL18-100MM	FTXL30-100MM
105MM				FTXL14-105MM	FTXL18-105MM	FTXL30-105MM
4-1/4"					FTXL18-404	FTXL30-404
110MM					FTXL18-110MM	FTXL30-110MM
115MM					FTXL18-115MM	FTXL30-115MM
4-5/8"					FTXL18-410	FTXL30-410
5"					FTXL18-500	FTXL30-500
130MM					FTXL18-130MM	FTXL30-130MM
5-3/8"						FTXL30-506
145MM						FTXL30-145MM
5-3/4"						FTXL30-512
6-1/8" (155MM)						FTXL30-602
6-1/2"						FTXL30-608

OTHER SIZES AVAILABLE ON REQUEST

▼ **HYDRAULIC TORQUE WRENCH ACCESSORIES**
LOW PROFILE WRENCH REACTION ARMS



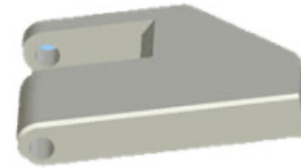
▼ LOW PROFILE WRENCH REACTION ARMS AND ADAPTORS

ALCO REACTION ARMS



	FTXL-2	FTXL-4	FTXL-8	FTXL-14	FTXL-18	FTXL-30
6" Alco Arm	FTXL2-ALC6	FTXL4-ALC6	FTXL8-ALC6	FTXL14-ALC6	FTXL18-ALC6	FTXL30-ALC6
12" Alco Arm	FTXL2-ALC12	FTXL4-ALC12	FTXL8-ALC12	FTXL14-ALC12	FTXL18-ALC12	FTXL30-ALC12
18" Alco Arm	FTXL2-ALC18	FTXL4-ALC18	FTXL8-ALC18	FTXL14-ALC18	FTXL18-ALC18	FTXL30-ALC18
24" Alco Arm	FTXL2-ALC24	FTXL4-ALC24	FTXL8-ALC24	FTXL14-ALC24	FTXL18-ALC24	FTXL30-ALC24

REACTION PAD



	FTXL-2	FTXL-4	FTXL-8	FTXL-14	FTXL-18	FTXL-30
Reaction Pad	FTXL2-RP	FTXL4-RP	FTXL8-RP	FTXL14-RP	FTXL18-RP	FTXL30-RP

HEX TO SQUARE DRIVE ADAPTOR



	FTXL-2	FTXL-4	FTXL-8	FTXL-14	FTXL-18	FTXL-30
Hex to 3/4" SQDR	FTXL2-HX###SQ075					
Hex to 1" SQDR	FTXL2-HX###SQ100	FTXL4-HX###SQ100				
Hex to 1-1/2" SQDR		FTXL4-HX###SQ150	FTXL8-HX###SQ150	FTXL14-HX###SQ150	FTXL18-HX###SQ150	
Hex to 2-1/2" SQDR			FTXL8-HX###SQ250	FTXL14-HX###SQ250	FTXL18-HX###SQ250	FTXL30-HX###SQ250

CUSTOM SIZES AVAILABLE ON REQUEST

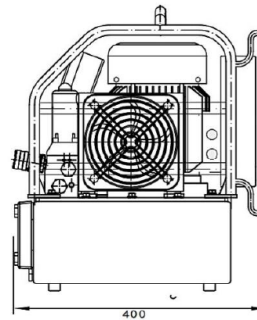
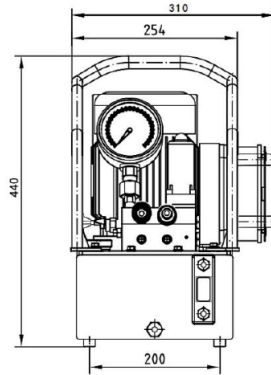
▼ FETP SERIES ELECTRIC HYDRAULIC TORQUE WRENCH PUMP



> CHARACTERISTICS

- High-efficiency 2 and 3 stages pump.
- External start-up switch for easier use of the remote.
- Automatic cooler increases pump reliability.
- Advanced Pressure control valve provides stable Pressure.
- Single phase brush-less motor provides high efficiency, low maintenance and longevity.
- 2 or 4 tools manifold available.
- Wireless remote available.

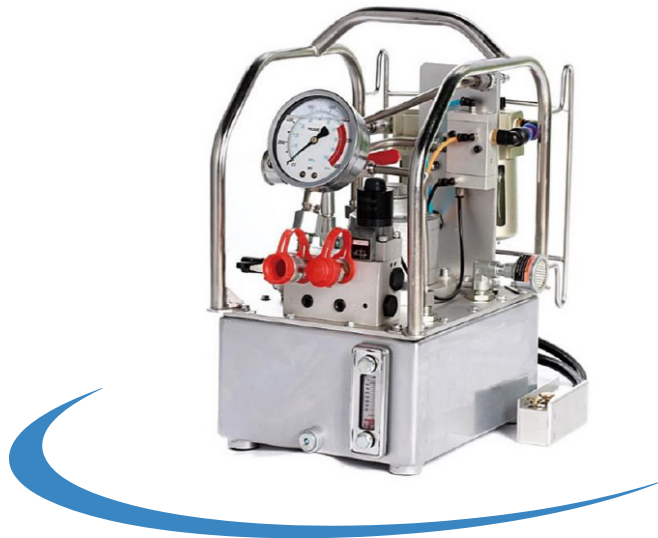
> DIMENSIONS (MM)



> SPECIFICATIONS SHEET

Model Number	Oil Flow (in3/min)			Pressure (Psi)			Power HP	Usable oil capacity Gal	Input power	Weight Lbs	Dimensions (Inch) L x W x H
	High Pressure	Middle Pressure	Low Pressure	High Pressure	Middle Pressure	Low Pressure					
FETP-2	49	-	366	10 000	-	870	1,5	1,5	110V/220V - 50HZ/60HZ	60	16 x 13 x 18.5
FETP-2RW	49	-	366	10 000	-	870	1,5	1,5	110V/220V - 50HZ/60HZ	60	16 x 13 x 18.5
FETP-3	49	98	366	10 000	4640	870	1,5	1,5	110V/220V - 50HZ/60HZ	60	16 x 13 x 18.5
FETP-3RW	49	98	366	10 000	4640	870	1,5	1,5	110V/220V - 50HZ/60HZ	60	16 x 13 x 18.5
FETP-3M4	49	98	366	10 000	4640	870	1,5	1,5	110V/220V - 50HZ/60HZ	62	16 x 13 x 18.5
FETP-3M4RW	49	98	366	10 000	4640	870	1,5	1,5	110V/220V - 50HZ/60HZ	62	16 x 13 x 18.5

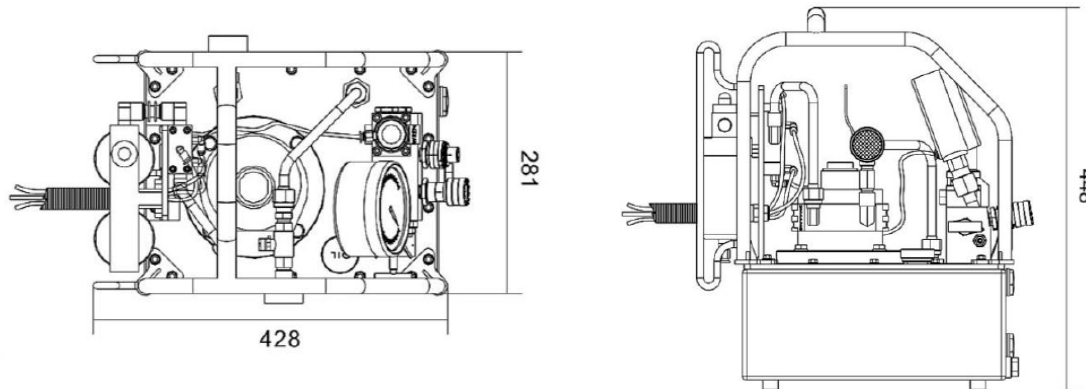
▼ **FATP SERIES AIR HYDRAULIC TORQUE WRENCH PUMP**



> **CHARACTERISTICS**

- High-efficiency 3 stages pump.
- Aluminum-Titanium alloy light weight body.
- Steel frame protection.
- 2 or 4 tools manifold available.
- Aluminum explosion-proof handle remote.
- Wireless remote Available.

> **DIMENSIONS (MM)**



> **SPECIFICATIONS SHEET**

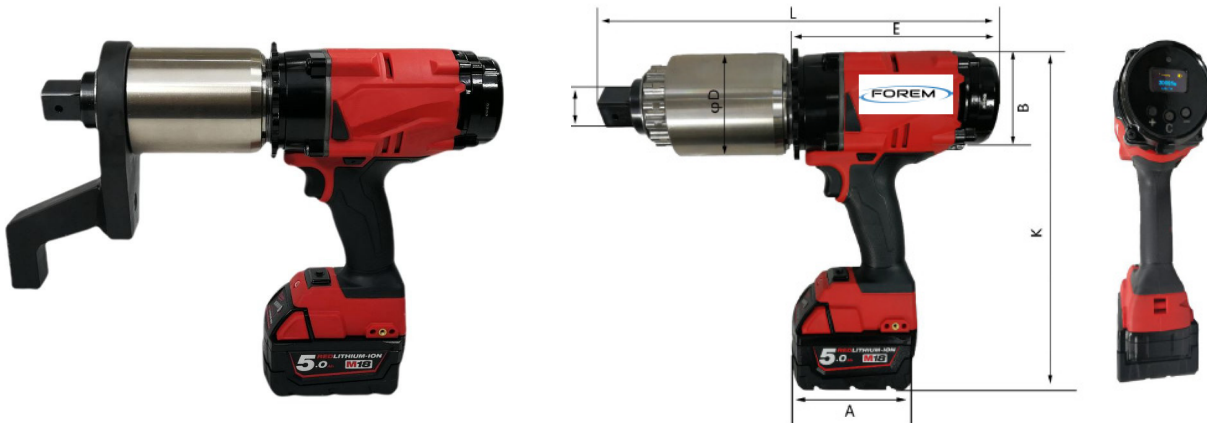
Model Number	Oil Flow (in ³ /min)			Pressure (Psi)			Power HP	Usable oil capacity Gal	Air Pressure Range Psi	Air Consumption CFM	Weight Lbs
	High Pressure	Middle Pressure	Low Pressure	High Pressure	Middle Pressure	Low Pressure					
FATP-8	49	98	488	10 000	4640	870	1,75	1,5	60-120	79	46
FATP-8RW	49	98	488	10 000	4640	870	1,75	1,5	60-120	79	46
FATP-8M4	49	98	488	10 000	4640	870	1,75	1,5	60-120	79	48
FATP-8M4RW	49	98	488	10 000	4640	870	1,75	1,5	60-120	79	48

▼ **FBEW SERIES BATTERY TORQUE WRENCH**



> **CHARACTERISTICS**

- Digital display cordless battery torque wrench with digital torque settings.
- Programmable preset torque value.
- Standard with two 18V 8Ah lithium batteries and a fast charger.
- Accuracy up to +/- 5 %.
- Using brushless motor.
- Torque from 350 to 6000 Ft.lb.
- 110V Converter adaptor available.



> **SPECIFICATIONS SHEET**

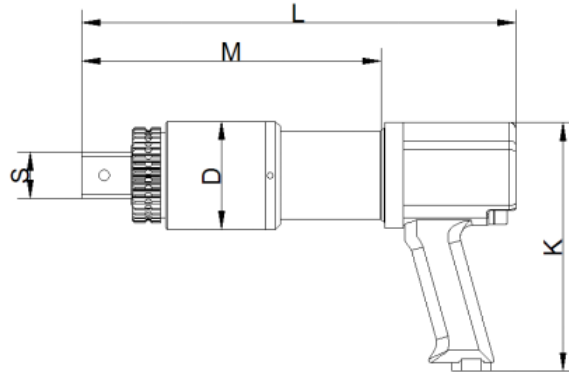
Model	Min. torque Ft.lb	Max. torque Ft.lb	Square Inch	D Inch	E Inch	L Inch	K Inch	A Inch	B Inch	Weight (Lbs)	Speed (Rpm)
FBEW-350S	35	350	3/4"	2,56	7,09	12,44	10,24	4,3	3,15	10,5	10
FBEW-700S	74	737	3/4"	2,56	7,09	12,44	10,24	4,3	3,15	11,2	9
FBEW-1000S	147	1180	1"	2,72	7,09	13,23	10,24	4,3	3,15	13	5
FBEW-1500S	147	1475	1"	2,72	7,09	13,23	10,24	4,3	3,15	13	4,5
FBEW-2000S	295	2213	1"	3,23	7,09	14,09	10,24	4,3	3,15	15	3
FBEW-3000S	516	2950	1"	3,23	7,09	14,09	10,24	4,3	3,15	15	2,4

▼ **FPW SERIES** **DOUBLE SPEED PNEUMATIC TORQUE WRENCH**



> **CHARACTERISTICS**

- Tight and Compact Design, Suitable for a Variety of Applications.
- Heavy Duty Gear Box for Longer Operational Life.
- Accuracy over +/- 5%.
- Come with Standard Angle Reaction Arm.



> **SPECIFICATIONS SHEET**

Model	Min. torque Ft.lb	Max. torque Ft.lb	Square Inch	D Inch	L Inch	H1 Inch	H2 Inch	R1 Inch	R2 Inch	Weight (Lbs)	Speed (Rpm)
FPW-350DS	74	369	3/4"	2,48	6,70	2,76	7,28	2,20	3,90	8,8	50
FPW-700DS	213	700	3/4"	2,91	9,84	2,76	7,28	2,44	4,41	10,6	28
FPW-1000DS	354	1209	1"	3,07	10,24	2,76	7,28	2,76	5,12	11,5	21
FPW-1500DS	361	1512	1"	3,07	10,24	2,76	7,28	2,76	5,12	12,1	15
FPW-2000DS	597	2286	1"	3,46	13,39	2,76	7,28	3,15	5,91	15,4	10
FPW-3000DS	877	3171	1"	3,46	13,39	2,76	7,28	3,15	5,91	19,8	7
FPW-4500DS	811	4572	1-1/2"	4,45	14,96	2,76	7,28	3,66	6,22	30,9	5
FPW-6000DS	1180	5900	1-1/2"	4,72	14,96	2,76	7,28	3,66	6,22	39,7	4

▼ **PNEUMATIC / ELECTRIC TORQUE
WRENCH ACCESSORIES**



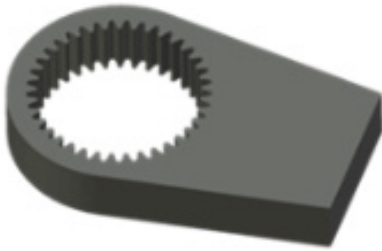
**STANDARD ANGLE /
DEEP ANGLE**



**90° ANGLE /
90° DEEP**



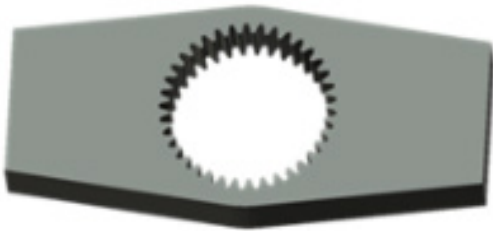
**DOUBLE END
ANGLE**



**SINGLE
BLANK**



SLIDING











**DOUBLE
BLANK**



EXT. 12" / 18" NOSE

▼ PNEUMATIC / ELECTRIC TORQUE WRENCH ACCESSORIES

										
Model	Standard Angled	Deep Angled	90° standard	90° Deep	Double Ended Angled	Single Blank	Double Blank	Sliding	Nose ext 12" Long	Nose ext 18" Long
FPW-500SS	500S-SRA	500S-DARA	500S-90SRA	500S-90DRA	500S-DEARA	500S-SB	500S-DB	500S-SLD	500S-NEXT12	500S-NEXT18
FPW-700SS	700S-SRA	700S-DARA	700S-90SRA	700S-90DRA	700S-DEARA	700S-SB	700S-DB	700S-SLD	700S-NEXT12	700S-NEXT18
FPW-1000SS	1000S-SRA	1000S-DARA	1000S-90SRA	1000S-90DRA	1000S-DEARA	1000S-SB	1000S-DB	1000S-SLD	1000S-NEXT12	1000S-NEXT18
FPW-1500SS	1500S-SRA	1500S-DARA	1500S-90SRA	1500S-90DRA	1500S-DEARA	1500S-SB	1500S-DB	1500S-SLD	1500S-NEXT12	1500S-NEXT18
FPW-2000SS	2000S-SRA	2000S-DARA	2000S-90SRA	2000S-90DRA	2000S-DEARA	2000S-SB	2000S-DB	2000S-SLD	2000S-NEXT12	2000S-NEXT18
FPW-3000SS	3000S-SRA	3000S-DARA	3000S-90SRA	3000S-90DRA	3000S-DEARA	3000S-SB	3000S-DB	3000S-SLD	3000S-NEXT12	3000S-NEXT18
FPW-4500SS	4500S-SRA	4500S-DARA	4500S-90SRA	4500S-90DRA	4500S-DEARA	4500S-SB	4500S-DB	4500S-SLD	4500S-NEXT12	4500S-NEXT18
FPW-6000SS	6000S-SRA	6000S-DARA	6000S-90SRA	6000S-90DRA	6000S-DEARA	6000S-SB	6000S-DB	6000S-SLD	6000S-NEXT12	6000S-NEXT18
FPW-8000SS	8000S-SRA	8000S-DARA	8000S-90SRA	8000S-90DRA	8000S-DEARA	8000S-SB	8000S-DB	8000S-SLD	8000S-NEXT12	8000S-NEXT18
FPW-10000SS	10000S-SRA	10000S-DARA	10000S-90SRA	10000S-90DRA	10000S-DEARA	10000S-SB	10000S-DB	10000S-SLD	10000S-NEXT12	10000S-NEXT18

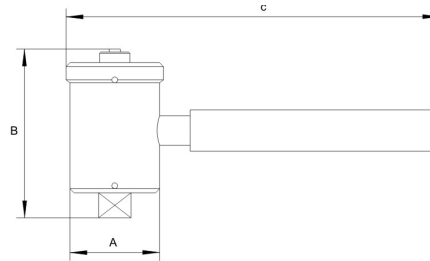
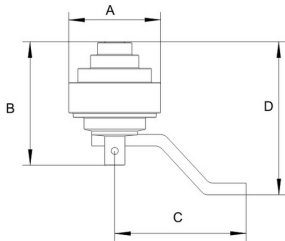
▼ **HT SERIES** **HAND TORQUE MULTIPLIER**

> **CHARACTERISTICS - HT3 SERIES**

- Repeatability accuracy of +/- 4%
- Two stages planet gear.

> **CHARACTERISTICS - HT4 SERIES**

- Repeatability accuracy of +/- 4%
- Two stages planet gear.
- With anti reverse ratchet.



> **SPECIFICATIONS SHEET**

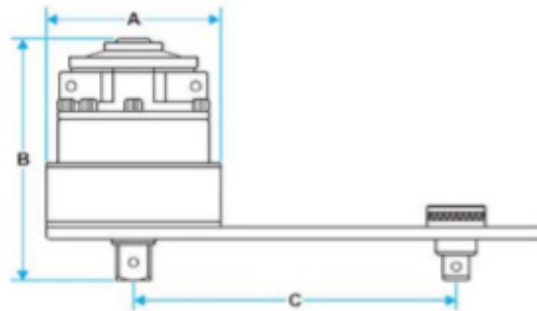
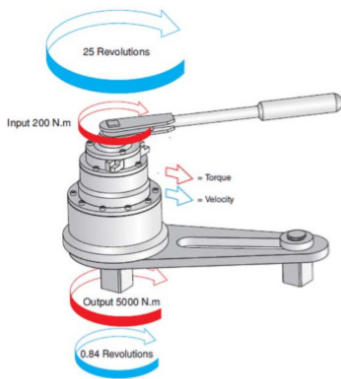
Model	Torque Range		Ratio	Input SQDR	Output SQDR	A	B	C	D	Weight
	Ft.lb	N.m								
HT3-1300	960	1300	5:1	1/2"	3/4"	4.25	4.96	8.27	7.09	11.3
HT3-2700	2000	2700	5:1	3/4"	1"	4.25	5.04	8.27	7.32	11.3
HT4-3000	2200	3000	15.5:1	1/2"	1"	4.25	6.14	17.72	-	17.6
HT4-4500	3300	4500	26:1	1/2"	1"	4.25	6.81	17.72	-	19.8

▼ FTM SERIES HAND TORQUE MULTIPLIER



> CHARACTERISTICS

- Anti reverse ratchet prevents the spring effect on the return
- Suggested for tightening of high tensile bolts or loosening rusty and frozen nut bolts.
- Use at very high torque to minimize input effort.
- Heavy Duty tool to increase the torque
- Three multiplication factors available : 5:1, 25:1 and 125:1
- Torque from 1,250 to 35,000 ft/lb



Model	Torque Range		Ratio	Input SQDR	Output SQDR	A	B	C Min.	C Max.	Weight
	Ft.lb	N.m								
FTM-1	1250	1700	5:1	1/2"	3/4"	4,25	4,17	3,27	8,54	11,5
FTM-2	1250	1700	5:1	3/4"	1"	4,25	4,96	3,27	8,54	11,5
FTM-2/25	1250	1700	25:1	1/2"	1"	4,69	5,57	3,27	10,39	17,6
FTM-5	2000	2700	5:1	3/4"	1"	4,25	5,59	3,39	10,39	15,9
FTM-5/25	2000	2700	25:1	1/2"	1"	4,69	6,60	3,39	10,39	22,0
FTM-6	2500	3400	5:1	3/4"	1-1/2"	4,69	5,70	3,39	10,39	17,6
FTM-6/25	2500	3400	25:1	1/2"	1-1/2"	4,69	6,77	3,39	10,39	22,0
FTM-7	4500	6000	5:1	3/4"	1-1/2"	5,67	6,88	5,75	13,11	33,1
FTM-7/25	4500	6000	25:1	1/2"	1-1/2"	5,67	8,90	5,75	13,11	41,9
FTM-9/25	7000	9500	25:1	3/4"	1-1/2"	7,24	7,87	6,73	13,82	57,3
FTM-11/25	14700	20000	25:1	3/4"	2-1/2"	8,35	10,46	-	-	97,0
FTM-11/125	14700	20000	125:1	3/4"	2-1/2"	8,35	11,55	-	-	101,4
FTM-13/125	35000	47500	125:1	3/4"	2-1/2"	12,40	14,92	-	-	227,1

▼ **MBW SERIES** **MAGNETIC BACKUP WRENCH**



> **CHARACTERISTICS**

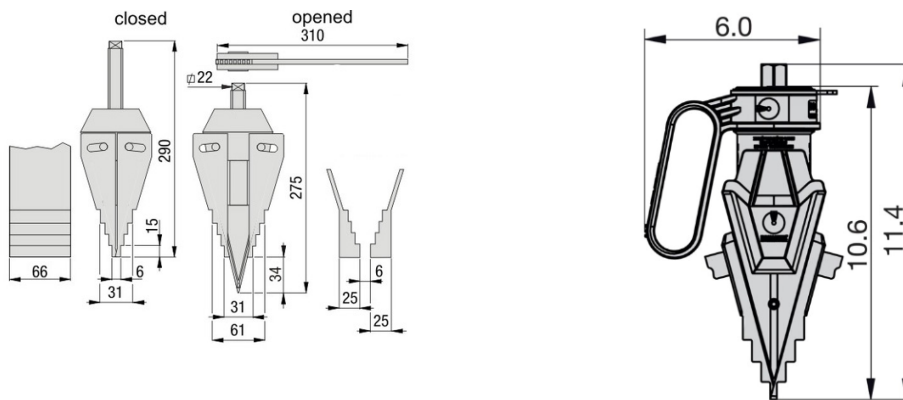
- Magnetic for hand free
- Good for non-sparking environment
- Tension release bolt

AF Nut Size	Part No.
1-1/16" (27MM)	MBW-101
30MM	MBW-30MM
1-1/4" (32MM)	MBW-104
1-7/16" (36MM)	MBW-107
1-5/8" (41MM)	MBW-110
1-13/16" (46MM)	MBW-113
50MM	MBW-50MM
2"	MBW-200
2-3/16" (55MM)	MBW-203
2-3/8" (60MM)	MBW-206
2-9/16" (65MM)	MBW-209
2-3/4" (70MM)	MBW-212
2-15/16" (75MM)	MBW-215
3-1/8"	MBW-302
80MM	MBW-80MM
3-5/16"	MBW-305
85MM	MBW-85

AF Nut Size	Part No.
3-1/2"	MBW-308
90MM	MBW-90MM
3-11/16	MBW-311
3-3/4" (95MM)	MBW-312
3-7/8"	MBW-314
100MM	MBW-100MM
105MM	MBW-105MM
4-1/4"	MBW-404
110MM	MBW-110MM
115MM	MBW-115MM
4-5/8"	MBW-410
5"	MBW-500
130MM	MBW-130MM
5-3/8"	MBW-506
145MM	MBW-145MM
5-3/4"	MBW-512
6-1/8" (155MM)	MBW-602

OTHER SIZES AVAILABLE ON REQUEST

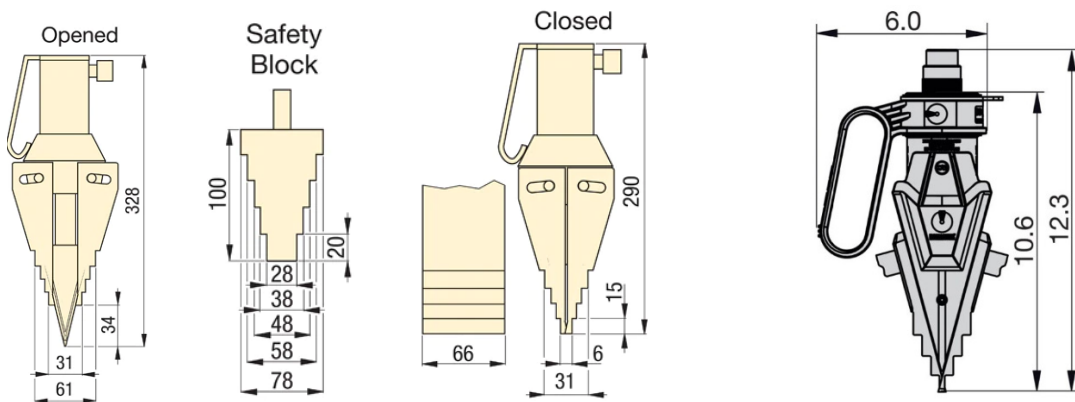
▼ **MFS SERIES** **MECHANICAL FLANGE SPREADER**



> **SPECIFICATIONS SHEET**

Model	Capacity	Max. Spread	Tip Clearance	Weight
	T	Inch (mm)	Inch (mm)	Lbs (kg)
MFS-8	8	3.19 (81)	0.24 (6)	17.6 (8.0)
MFS-14	14	4.07 (103.5)	0.24 (6)	28.7 (13.0)

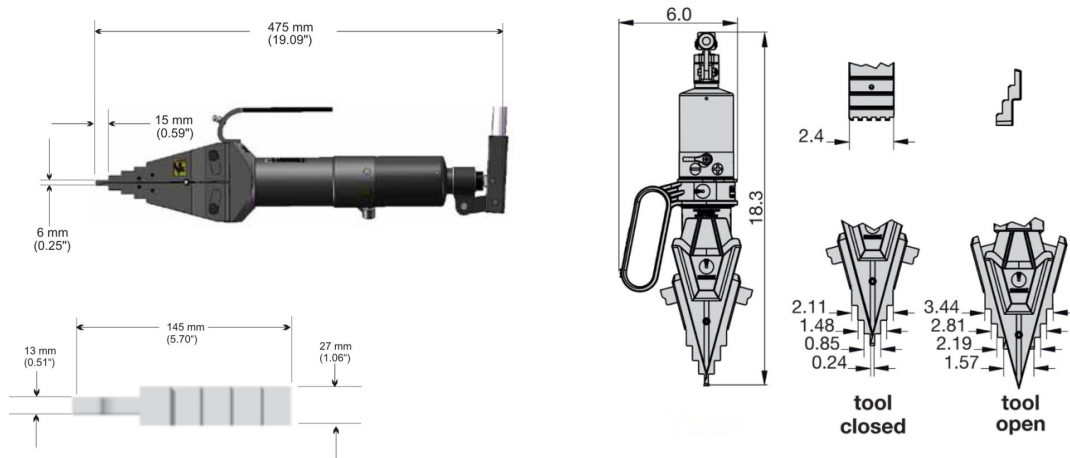
▼ **HFS SERIES** **HYDRAULIC FLANGE SPREADER**



> **SPECIFICATIONS SHEET**

Model	Capacity	Max. Spread	Tip Clearance	Weight
	T	Inch (mm)	Inch (mm)	Lbs (kg)
HFS-14	14	3.16 (80)	0.24 (6)	19.8 (9.0)
HFS-24	24	4.07 (103.5)	0.24 (6)	33.1 (15.0)

▼ **HIFS SERIES** **HYDRAULIC INTEGRAL FLANGE SPREADER**

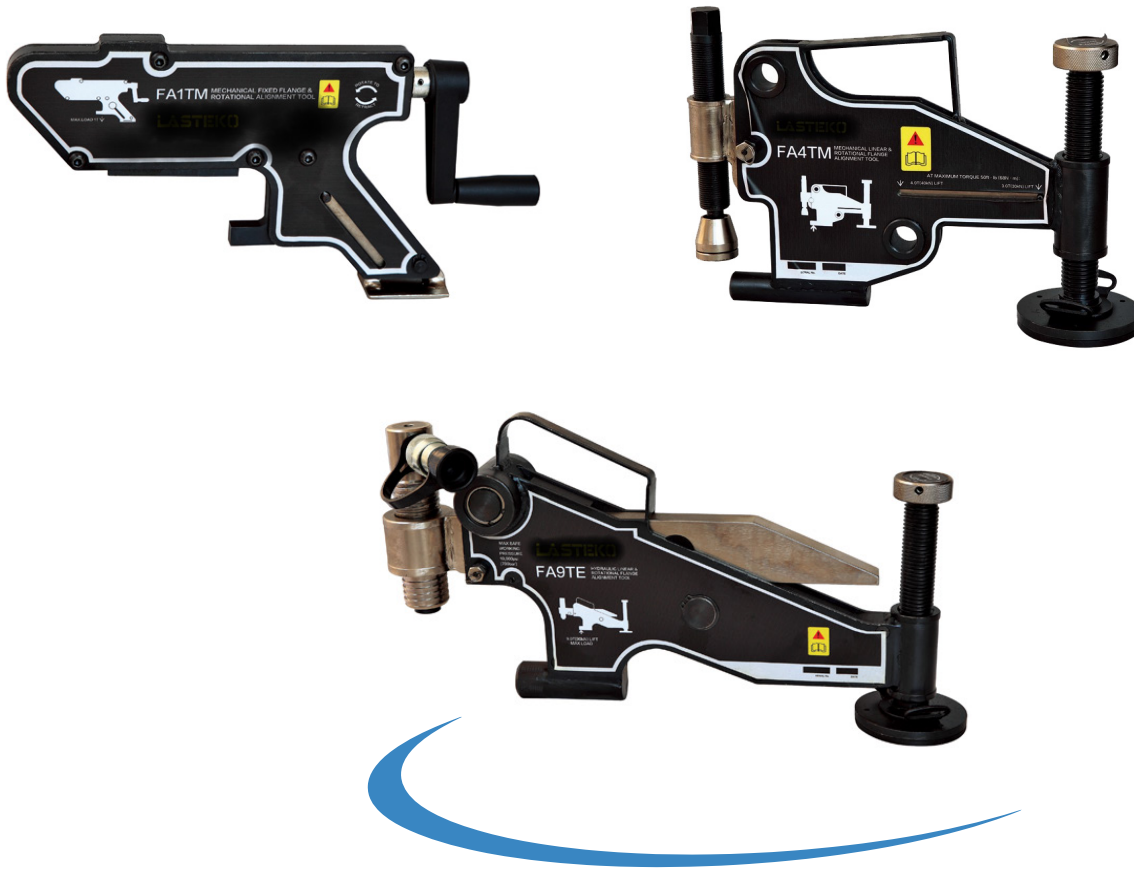


> **SPECIFICATIONS SHEET**

Model	Capacity	Max. Spread	Tip Clearance	Weight
	T	Inch (mm)	Inch (mm)	Lbs (kg)
HIFS-15	15	3.19 (81)	0.24 (6)	22.0 (10.0)
HIFS-24	24	4.07 (103.5)	0.24 (6)	30.9 (14.0)

▼ **FA SERIES**

FLANGE ALIGNMENT TOOL



> **SPECIFICATIONS SHEET**

Model number	Type	Align Load	Min. Bolt Size	Flange Thickness	Weight
		Ton (Kn)	Inch (mm)	Inch (mm)	Lbs (Kg)
FA-1TM	Mechanical	1 (10)	0.63 (16)	0.55-3.23 (14-82)	4.4 (2.0)
FA-4TM	Mechanical	4 (40)	0.95 (24)	1.18-5.24 (30-133)	19.0 (8.6)
FA-9TM	Mechanical	9 (90)	1.24 (31.5)	3.66-8.98 (93-228)	36.4 (16.5)
FA-9TE	Hydraulic	9 (90)	1.24 (31.5)	3.66-8.98 (93-228)	36.4 (16.5)

▼ **ACCESSORIES**



**TORQUE WRENCH
TWINLINE HOSES**

Model	Material	I.D.	Length (Ft)
HTW0404-20	Rubber	1/4"	20
HPTW0404-20	Polyurethane	1/4"	20

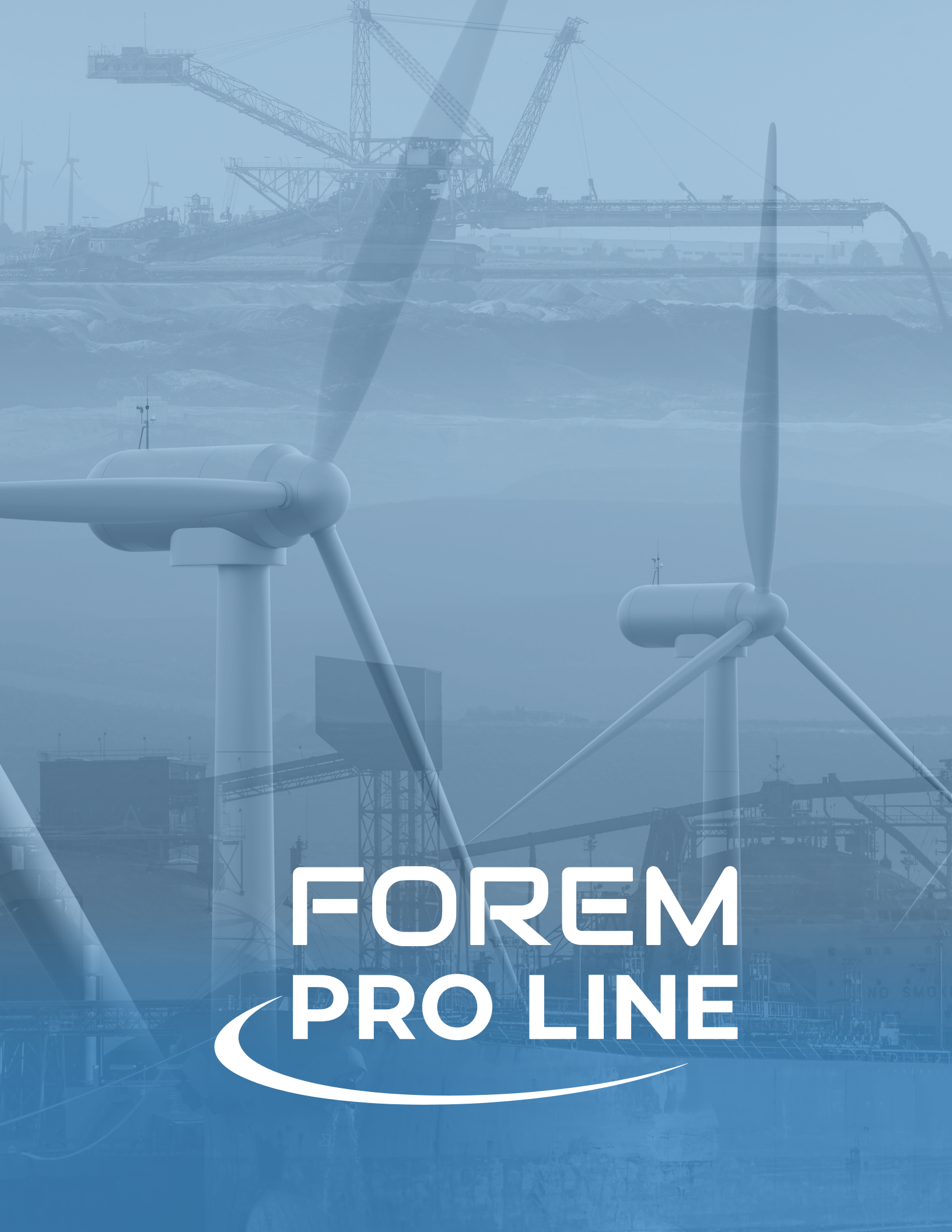
**SCREWED
TYPE
COUPLER**



**QUICK
CONNECT
POPPET TYPE**

COUPLERS

Model	Description	Body Size	Port Size	Thread Type
STU-800201008	Female Screwed Type Coupler	1/4	1/4	NPT Male
STU-800201009	Male Screwed Type Coupler	1/4	1/4	NPT Female
STU-800201010	Male Screwed Type Coupler	1/4	1/4	NPT Male
BT-115-1402	Female Q.C. Poppet Type Coupler	1/4	1/4	NPT Female
BT-115-6402	Male Q.C. Poppet Type Coupler	1/4	1/4	NPT Female



FOREM PRO LINE

