

# SHC SERIES

## Single-Acting Hollow Cylinders




**Capacity: 13-100tons**

**Stroke: 1.65-6.1 inch**

**Max. Pressure: 10,000 psi**

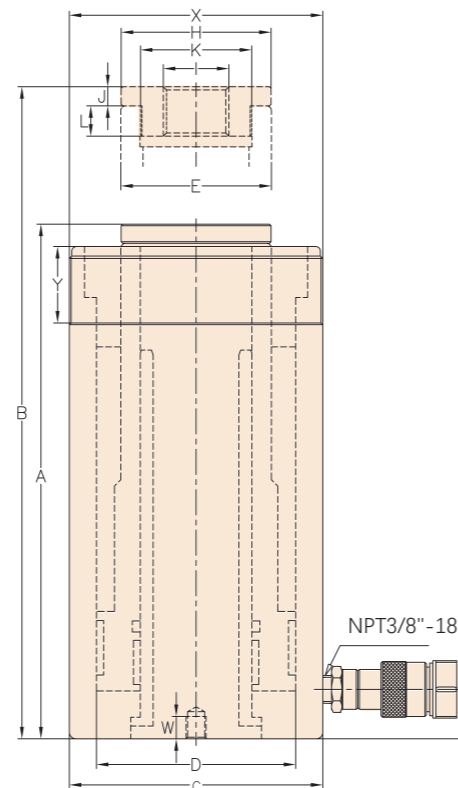
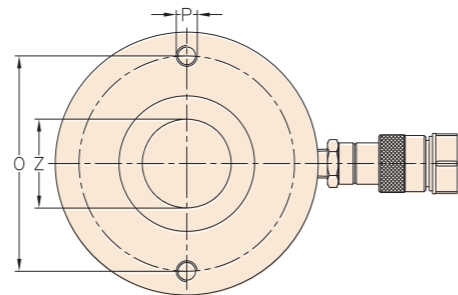
**Pump Selection**

Selection appropriate pumps for offer optimum combination. For details, please refer to the section "hydraulic pumps".




### Features

- Single-acting, high strength spring return, easy to use.
- Hollow plunger design allows for both, pull and push forces.
- Dual dust-proof ring structure remains cylinder internal cleaning.
- The exclusive guide ring is designed absorbs eccentric loading without galling cylinder parts, reduces wear and extending life.
- Special painted surface to increase corrosion resistance.
- Easy fixturing with collar threads, plunger threads and base mounting holes.
- All models include quick couplings (NPT3/8"-18) and dust-proof cap.
- Floating center tube is designed to increase product life.
- Customizable with special requirement.




**Saddles**

ALL SHC-Series cylinders are equipped with smooth saddles.



**Hoses**

Select AIPI high quality high pressure hoses. For details, please refer to the section "hydraulic components".



### Quick Selection Chart

Cylinder Capacity	Stroke	Model Number	Oil Capacity	Collapsed Height	Extended Height	Outside Dia.	Cylinder Bore Dia.	Plunger Dia.	Weight
				A	B	C	D	E	
ton (Max.)	(inch)		(in <sup>3</sup> )	(inch)	(inch)	(inch)	(inch)	(inch)	(lbs)
13 (12.5)	1.65	SHC130-42	4.6	5.12	6.77	3.00	2.17	1.40	7
	3.00	SHC130-76	8.4	7.24	10.24	3.00	2.17	1.40	11
20 (21.5)	1.93	SHC200-49	10.6	6.38	8.30	3.94	3.00	2.15	18
	6.10	SHC200-155	33.6	12.05	18.15	3.94	3.00	2.15	33
30 (32.6)	2.52	SHC300-64	18.7	7.10	9.60	4.53	3.54	2.54	25
	6.10	SHC300-155	45.4	13.00	19.10	4.53	3.54	2.54	47
60 (57.6)	3.00	SHC600-76	39.1	9.72	12.72	6.26	4.92	3.72	62
	6.00	SHC600-153	78.6	12.72	18.74	6.26	4.92	3.72	78
95 (93.1)	3.00	SHC1000-76	62.7	10.00	13.00	8.35	6.50	4.92	140

### Installation Reference Datasheet

Model Number	Base to Advance Port	Saddle Dia.	Saddle Protr. from Plgr.	Saddle Internal Thread	Plunger Internal Thread	Plunger Thread Length	Base Mounting Holes			Collar Thread	Collar Thread Length	Center Hole Dia
	F	H	I	J	K	L	Bolt Circle	Thread	Thd. Depth	X	Y	Z
	(inch)	(inch)	(inch)			(inch)	(inch)		(inch)		(inch)	(inch)
SHC130-42	0.80	\	\	\	3/4"-16UN	0.63	2.00	5/16"-18UNC	0.35	2 3/4"-16	1.18	0.77
SHC130-76	0.80	\	\	\	\	\	2.00	5/16"-18UNC	0.50	2 3/4"-16	1.18	0.77
SHC200-49	0.90	2.13	0.35	1"-8	1 1/16"-16UN	0.75	3.25	3/8"-16UNC	0.37	3 7/8"-12	1.50	1.06
SHC200-155	0.90	2.13	0.35	1"-8	1 1/16"-16UN	0.75	3.25	3/8"-16UNC	0.37	3 7/8"-12	1.50	1.06
SHC300-64	0.98	2.52	0.35	1 1/4"-7	1 3/16"-16UN	0.87	3.63	3/8"-16UNC	0.55	4 1/2"-12	1.65	1.30
SHC300-155	0.98	2.52	0.35	1 1/4"-7	1 3/16"-16UN	0.87	3.63	3/8"-16UNC	0.55	4 1/2"-12	1.65	1.30
SHC600-76	1.22	3.70	0.47	1 5/8"-5 1/2"	2 3/4"-16UN	0.75	5.13	1/2"-13UNC	0.55	6 1/4"-12	1.90	2.12
SHC600-153	1.22	3.70	0.47	1 5/8"-5 1/2"	2 3/4"-16UN	0.75	5.13	1/2"-13UNC	0.55	6 1/4"-12	1.90	2.12
SHC1000-76	1.34	4.92	0.47	2 1/2"-8	4"-16UN	0.98	7.00	5/8"-11UNC	0.75	8 3/8"-12	2.36	3.10